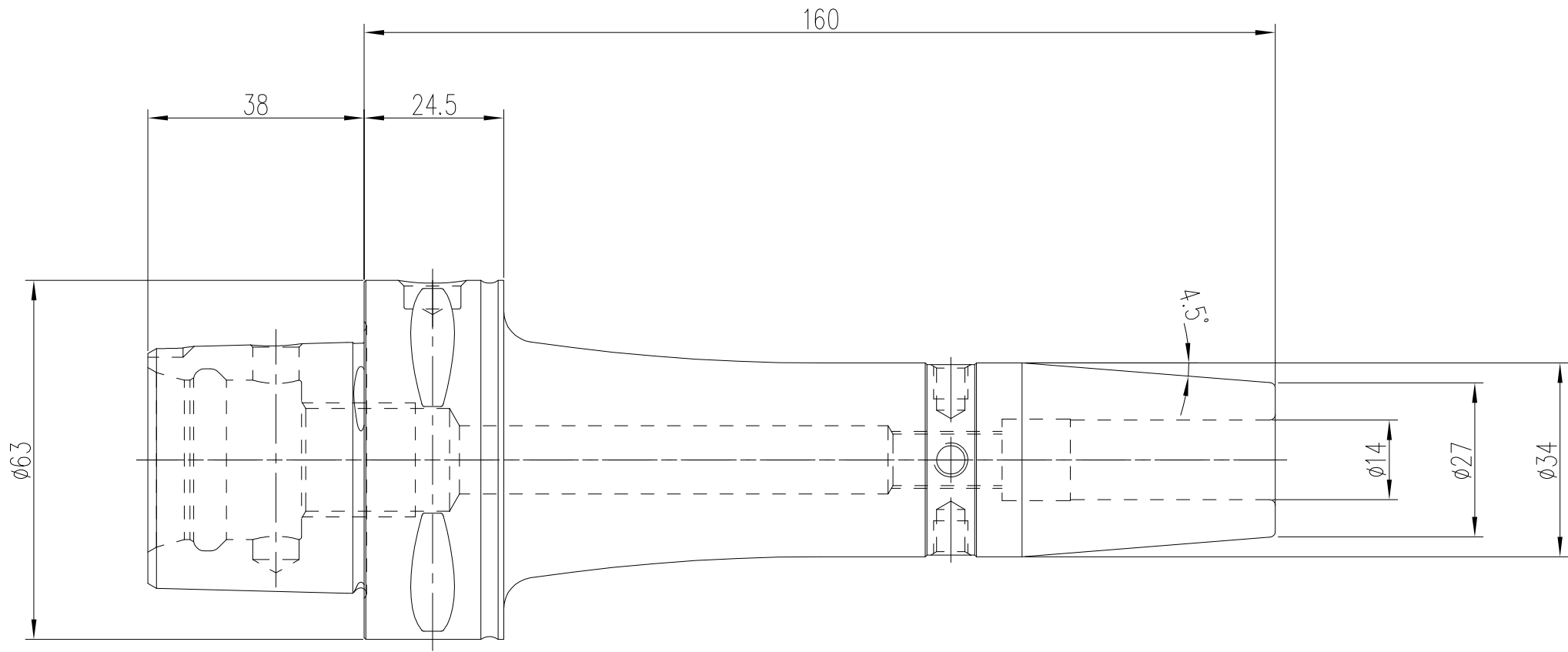
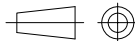



Weitergabe sowie Vervielfältigung dieser Zeichnung, Verwertung und Mitteilung seines Inhaltes sind verboten, soweit nicht ausdrücklich gestattet.
Zuwiderhandlungen verpflichten zu Schadenersatz. Alle Rechte für den Fall der Patent-, Gebrauchsmuster- oder Geschmacksmustereintragung vorbehalten.
The reproduction, distribution and utilization of this drawing as well as the communication of this contents to others without express authorization is prohibited.
Offenders will be held liable for the payment of damages. All rights reserved in the event of the grant of a patent, utility model or design.

DIN A3_MB_CRF04



| | | | | | | | | | | | | | |
|---|--|------------------|--|-----------------------------------|---|----------|-----------------|--|---|--|---|--------------------|--|
| technische Aenderungen vorbehalten / subject to technical alterations | | | | |  | | Gewicht/weight= | | kg | | | | |
| Schutzvermerk ISO 16016 beachten / refer to protection notice ISO 16016 | | | | | | | | | | | | | |
| | | | | Maßstab scale 1:1 | A3 | Datum | Name | |  | | Bilz Werkzeugfabrik GmbH & Co. KG 73760 Ostfildern/Germany www.bilz.de | | |
| | | | | | Konst. | 05.09.22 | Be | | | | | | |
| 9 | | | | | Gez. | 05.09.22 | Be | | | | | | |
| 8 | | | | | Gepr. | | | | | | | | |
| 7 | | | | Spannfutter clamping chuck | | | | | | | | | |
| 6 | | | | | | | | | | | | | |
| 5 | | | | | | | | | | | | | |
| 4 | | | | | | | | | | | | | |
| 3 | | | | | | | | | | | | | |
| 2 | | | | Ident Nr. 5165077 | | | | | | | | | |
| 1 | | | | | | | | | | | | | |
| Nr. no. | | Aenderung change | | Datum date | | Name | | Bezeichnung / designation S1400-160/PSC63 | | | | Blatt sheet 1/1 | |
| | | | | | | | | Aenderungen nur im CAD / changes only in CAD | | | | | |