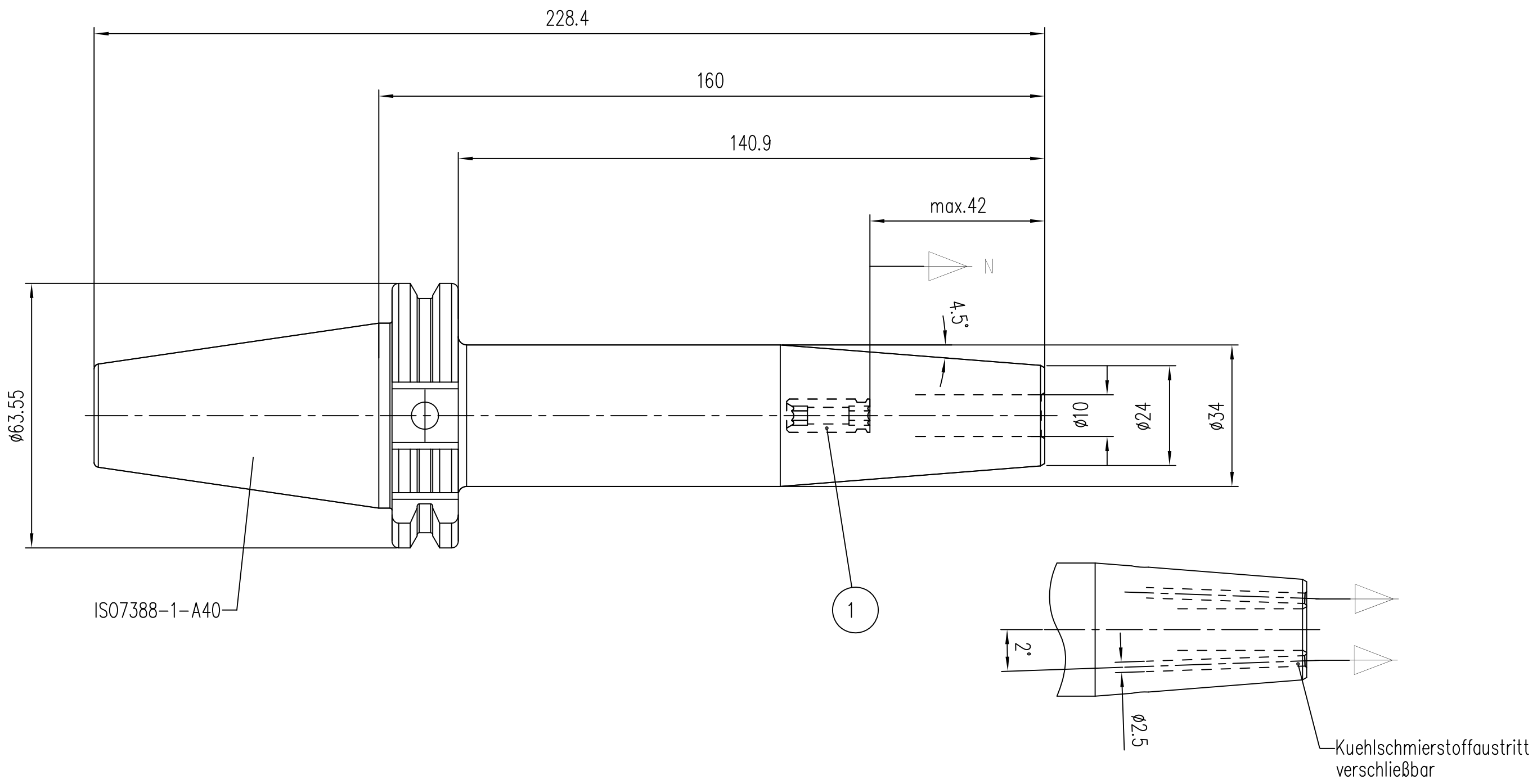




Weitergabe sowie Vervielfältigung dieser Zeichnung, Verwertung und Mitteilung seines Inhaltes sind verboten, soweit nicht ausdrücklich gestattet.  
Zurückverhandlungen verpflichten zu Schadenersatz. Alle Rechte für den Fall der Patent-, Gebrauchsmuster- oder Geschmacksmusterreintragung vorbehalten.  
The reproduction, distribution and utilization of this drawing as well as the communication of this contents to others without express authorization is prohibited.  
Offenders will be held liable for the payment of damages. All rights reserved in the event of the grant of a patent, utility model or design.

DIN A3, MB, CRE04



|   |                     |  |
|---|---------------------|--|
| Laengennachstellung<br>length adjustment                  | N = 10mm            |  |
| Restunwucht<br>residual imbalance                         | U < 1gmm            | fuer Futtermasse < 1kg<br>for chuck mass < 1kg   |
| Wuchtguete<br>balance quality                             | G2,5 25000 1/min    | fuer Futtermasse >= 1kg<br>for chuck mass >= 1kg |
| Kuehlmittelausfuehrung<br>coolant version                 | Cool Jet max. 50bar |  |
| Erwaermungstemperatur<br>heating temperature              | max. 350°C          |  |
| schrumpfbare Schafttoleranz<br>shrinkable shank tolerance | h6 / ISO286         |  |

t-cl-hsk-B4, Version 0.0

| Teile-Liste / parts list  |             |                             |  |            |  |               |  |                          |  |   |  |   | t-liste_at.tbl V2.2 |           |        |  |
|---|-------------|-----------------------------|--|------------|--|---------------|--|--------------------------|--|---|--|---|---------------------|-----------|--------|--|
| Pos. part   | Menge piece | Benennung                   |  |            |  | description   |  |                          |  | Bezeichnung / designation   |  |   |                     | Ident-Nr. |        |  |
| 1   | 1           | Einstellschraube            |  |            |  | setting screw |  |                          |  | T1000-K-2-M8X1X20   |  |   |                     | 6952178   |        |  |
| technische Aenderungen vorbehalten / subject to technical alterations   |             |                             |  |            |  |               |  |                          |  |  |  | Gewicht/weight=   |                     |           |        |  |
| Schutzvermerk ISO 16016 beachten / refer to protection notice ISO 16016 |             |                             |  |            |  |               |  |                          |  |   |  |   |                     |           |        |  |
|   |             | Maßstab<br>scale<br><br>1:1 |  | A3         |  | Datum         |  | Name                     |  |  |  | Bilz Werkzeugfabrik<br>GmbH & Co. KG<br>73760 Ostfildern/Germany<br>www.bilz.de |                     |           |        |  |
|   |             |                             |  | Konst.     |  | 03.12.19      |  | SD                       |  |   |  |   |                     |           |        |  |
| 9   |             |                             |  |            |  | Gez.          |  | 03.12.19                 |  |   |  |   |                     |           | A.Volk |  |
| 8   |             |                             |  |            |  | Gepr.         |  |                          |  |   |  |   |                     |           |        |  |
| 7   |             |                             |  |            |  |               |  |                          |  |   |  |   |                     |           |        |  |
| 6   |             |                             |  |            |  |               |  |                          |  |   |  | Spannfutter<br><br>clamping chuck   |                     |           |        |  |
| 5   |             |                             |  |            |  |               |  |                          |  |   |  |   |                     |           |        |  |
| 4   |             |                             |  |            |  |               |  |                          |  |   |  |   |                     |           |        |  |
| 3   |             |                             |  |            |  |               |  |                          |  |   |  |   |                     |           |        |  |
| 2   |             |                             |  |            |  |               |  |                          |  |   |  |   |                     |           |        |  |
| 1   |             |                             |  |            |  |               |  |                          |  |   |  | Blatt<br>sheet<br>1/1   |                     |           |        |  |
|   |             |                             |  |            |  |               |  |                          |  |   |  |   |                     |           |        |  |
| Nr. no.   |             | Aenderung change            |  | Datum date |  | Name          |  | Ident Nr.<br><br>5150378 |  | Bezeichnung / designation<br><br>T1000-160-C1-AD40                                    |  |   |                     |           |        |  |
| Zeichnungsname: 5150378   |             |                             |  |            |  |               |  |                          | Aenderungen nur im CAD / changes only in CAD |   |  |   |                     |           |        |  |